

AN SLÈITEACH

SLEAT'S NEWSLETTER

£1
Free online

Sleat Community Trust
Sleat Community Council
Camuscross & Duisdale Initiative

Urras Coimhearsnachd Shlèite
Comhairle Choimhearsnachd Shlèite
Iomairt Chamas Chrois & Dhuisdale
and the Sleat Community

An-diugh | a-màireach | còmhla ~ today | tomorrow | together

Geàrr-iomradh de naidheachdan Shlèite

July 2026 ~ An t-luchair 2026

Armadale Stores reaches £1m turnover

Sleat Trading Ltd were delighted that the Draft Accounts for the year ending in March 2026 showed that for the first time the Community Shop at Armadale reached £1m turnover. This is an incredible achievement by the dedicated and hard-working staff in

the Shop, supported by the Sleat Trading Board.

However, of course, large turnover does not mean large profits!

Our community shops need your ongoing support. see page 7

"What an amazing shop!

Stacked with products not seen on the mainland. Brilliant prices"

SLEAT – an amazing community of active people

SLÈITE – coimhearsnachd air leth de dhaoine èasgaidh

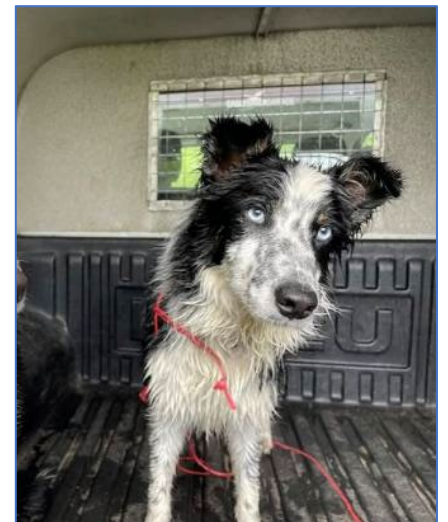
Willie and Erol Threfall work on the Mountain Bike Trail in the Tormore Community Woodland. **Page 5**



Gary Mahon talks about working with Calmac and why 'Locality' is so important.' **Page 6**



Norma MacPherson talks about Crofting life, alongside being a Shop Manager and local historian. **Page 6**



Sleat Community Trust gets Three-year Development Funding

Sleat Community Trust (SCT) has been awarded £120,000 funding over three years from the Scottish Government's Strengthening Communities Programme. See page 10

ALSO INSIDE – 12 pages of news and events.
Old Sleat Road Walking and Biking – page 2
An Crùbh News – page 3
Tormore Community Development Group – page 5
South Skye Nature Festival – page 12

Midsummer at the Fank



At very short notice and led by Peter Roberts, the Tormore Community Group planned a midsummer Solstice celebration at the Fank. They promised good weather and delivered a fully sunny midge-free afternoon. Over 25 people enjoyed a

BBQ and some great chat. We were delighted to welcome several people who had never been to the Tormore Woodland before.

Old Sleat Road Walking and Biking

The Old Sleat Road was officially opened on 26 June, as an active travel path in a project led by Sleat Community Trust and developed by a group of south Skye biking volunteers.

The works have seen drainage ditches dug, culverts cleared and vegetation cut back to make the old road more resilient. Accessibility has been improved at the Sculamus end with a new pedestrian gate and cycle cattle grid, and at the Drumfearn bus stop the Old Road has been extended to connect with the township road. Road safety and directional signs have also been installed, and an Old Road logo has been designed by Canan Graphics of Sleat to promote the path.

The project was funded by a grant of £250k from Walking Scotland Ian Finlay Paths Fund, with support from Transport Scotland. The work has been delivered by The Highland Council Roads Department, with additional input from their Active Travel Team.

“This is the first step towards an ambition to connect our communities with safe walking and cycling paths” explained Donald MacDonald, Chair of Sleat Community Trust. “The next phase, currently seeking funding, will be to build a new “missing link” path and bridges at Allt Cul Àiridh Lagain. This will create a continuous off-road route between Sculamus and Drumfearn.”

“Whilst we know this path as the Old Sleat Road, technically it was once the new road” explained project leader Ian Hall. Using information provided by Sleat Historical Society and Portree Archives Centre, Ian pieced together the history. The Old Sleat Road was built around 1810 as part of a nationwide programme of road building enabled by the Scottish Highland Roads and Bridges Act of 1803 and overseen by the engineer, Thomas Telford. Prior to this, the ‘Old Road’ diverged east towards the Abhainn Ceann Loch Eishort, before taking a route west of Loch Airigh na Suiridhe towards Broadford. The earlier route has largely disappeared from modern maps, although traces can still be followed if you’re prepared to get wet feet.

Ian Hall

The current A851 bypassed the Old Sleat Road in the 1990s, leaving it blissfully car free. If you have not yet tried out the path, you can now do so without getting either whacked in the face by branches or sliding on wet moss, and there are now ‘bench’ boulders on which to perch and enjoy a scenic rest from your activity.



The old road was heavily overgrown. This has been cut back and the full width of the old road recovered.



Camuscross and Duisdale Initiative

Camuscross & Duisdale Initiative took over from the work of Camuscross Community Steering Group which was set up in February 2007 to develop various projects for community benefit. It became a charity and a community company, limited by guarantee with the name of Camuscross Community Initiative. When the neighbouring crofting township of Duisdale was added to its

area of benefit in 2009, the company was renamed Camuscross & Duisdale Initiative (CDI).



CDI Board

Norman Gillies, Chair
Eilidh Robertson, Company Secretary
Emma Armstrong
Lorna Pike, Membership Secretary
Nicola Thomson
Mark Wringe
<https://camuscross.org/>

An Crùbh - for visitors new to the the area

Opened in 2017, An Crùbh is a community-owned hub which was developed by the Camuscross & Duisdale Initiative (CDI). It brings together a community shop, post office, café and flexible meeting space under one roof. The business is run by An Crùbh Ltd, creating local employment and helping to

support the area year-round. The site also offers electric vehicle charging and a five-pitch motorhome park with electric hook-ups, water and waste disposal facilities, available to book throughout the year.

Opening Times

Café Mondays - Sundays, 10am – 4pm
Café 01471 833417 *Seumas McNeill (Café Manager)*
Shop Mondays - Thursdays, 10am - 4.30pm
Fridays/Saturdays, 10am - 5.30pm
Sundays 10am – 4pm
Post office closes at 4pm and is closed all day on Sunday
Shop 01471 833780

An Crùbh Events

An Crùbh remains a busy hub for lots of local groups and activities, such as Tennis, Yoga, Capacitor Wellbeing, Line Dancing and Barre. Keep an eye on the Facebook page and posters at An Crùbh for the most up-to-date events and the monthly calendar is included with this issue.

Summer Markets on Saturdays 11 July, 8 August and 12 September, 11am to 3pm

Hall hire is only £10 + VAT per hour
To book contact Evangeline on ancrubhoffice@gmail.com and via Facebook [ancrubh](https://www.facebook.com/ancrubh)
Evangeline Majawat (Events Co-ordinator)

Lunch Club at An Crùbh

We were delighted to receive funding from the Budhmor Fund, to re-establish the Lunch Club at An Crùbh, which had been held at the El until the pandemic.

Skye Older Peoples
Welfare Committee

'Is mòid rud a roinn'

An Crùbh provided a lovely venue for friends and neighbours,

People's Emergency Briefing
On the climate and nature crisis

An Crùbh
Friday 10 July 2026, 7:30pm

A free screening unpacking the climate and nature crisis, while highlighting the realistic community-led solutions within our reach.
With discussion afterwards. Refreshments provided. **All welcome.**

Book here, or email reroot@tighgorm.scot

Image: Gerd Altmann

who might not otherwise meet on a regular basis, to gather and chat over lunch. Chefs Chris and Iain created varied menus and cooked lovely food which met with everyone's approval.

The club met every second Thursday, and its own band of volunteers did all the serving and washing-up for the group. Transport to and from An Crùbh was provided for those who needed it and time was allowed to visit the shop and post office, if necessary.

We are very grateful to the Budhmor Fund for their support and to all the staff and volunteers who made things run so

smoothly. A questionnaire was sent to members, and the pilot phase has been rated a great success. Suggestions and comments will assist with the next funding bid. We hope that the lunch club will resume in October. Keep a look out for

An Crùbh Developments

CDI wants to upgrade the **electric car charger**. This has proven to be a popular and helpful addition to the community hub, but it requires upgrading to ensure sustainability.

The CDI Board is working on funding applications to support **resilience and sustainability** for An Crùbh. Plans include possible **short-term accommodation**, and a couple of part-time jobs. Local employment continues to be among the charitable and community aims of CDI.

A **container** is being purchased to help with secure storage between events.

Keep an eye out for our **new information panels and posters** which share the history of CDI and how An Crùbh came to be.

We will also be looking at plans to **celebrate 10 years since An Crùbh's official opening**, probably some time in early 2027.

We now have a nicely landscaped area and new pots. Thanks to **Rosie, Kirsten** and pals for sorting this.

The **disabled parking areas** have been painted to make them clearer too.

An Crùbh

Tha CDI an dòchas inneal nan carbadan dealanach ùrachadh. Tha e air a bhith na ghoireas fheumail don choimhearsnachd, ach tha feum air ùrachadh gus dèanamh cinnteach gum bi e seasmhach san àm ri teachd.

Tha Bòrd CDI ag obair air iarrtasan maoinichaidh gus taic a thoirt do sheasmhachd agus ath-neartachadh A' Chrùbh. Am measg nam planaichean, tha àite-fuirich do luchd-turais agus cothrom air dà dhreuchd ùr. Tha cothroman cosnaidh ionadail fhathast aig cridhe amasan carthannais is coimhearsnachd CDI.

Thathar cuideachd a' ceannach soitheach-stòrais mar àite tèarainte airson uidheamachd a ghleidheadh eadar tachartasan.

information. If you are over 65 and interested in coming, please let us know.

Lorna Pike



Nicola Thomson

Cumaibh cluas ri chlaisneachd airson nam pannalan-fiosrachaidh agus nam postairean ùra againn, a dh'innseas sgeulachd CDI agus mar a thàinig An Crùbh gu bith. Bidh sinn cuideachd a' tòiseachadh air planaichean gus deich bliadhna bho fhosgladh oifigeil A' Chrùbh a chomharrachadh, uaireigin as t-earrach 2027.

Tha an raon mu thimcheall air A' Chrùbh a-nis air a sgeadachadh gu snog agus poitean fhlùraichean ann. Mòran taing do Rosie, Kirsten agus an caraidean airson an cuid saothrach!

Chaidh na h-àiteachan-pàircidh do dhaoine ciormach a pheantadh às ùr cuideachd, gus am bi e nas fhasa am faicinn.

Nicola NicThòmais

Whist Nights at An Crùbh

The Sleat Whist Group enjoyed another successful season at An Crùbh last winter. We were pleased to welcome some new faces and raised £2,200 for local charities; the highest since before the pandemic. The charities were Camuscross & Duisdale Initiative, MacMillan Cancer Support, RagTag & Textile, RNLI (Mallaig), Skye & Lochalsh Young Carers, Sleat & Strath AFC and South Skye Community Nurses Fund.

Players come from Sleat, Broadford, Breakish and the mainland so there is a real sense of community. All are welcome, including complete beginners. Whist is not a difficult game, and the main purpose of our evenings is to enjoy a night out, raise money, and enjoy a good laugh and a blether on a winter's evening. Hope to see you when we start again in October!

Lorna Pike



Tormore Community Woodland Development Group

In early May the Tormore Community Woodland held an Open Day to encourage more people to find out what is going on in the Woodland. Around 40 folk came along. One of the aims was to talk about ways to develop the woodland trails, to encourage more use and bring in new interest. A month later, at the next regular Tormore Volunteers morning, we planted a lot more trees, cleared paths and developed some of the ideas we had gathered.

We have bought new tools, including the new blue powered barrow.

We are looking at better visitor amenities – a toilet near the picnic site and how to put a roof over the bothy at the carpark. We want to improve information at the gate, with a lively new entrance sign and more clearly marked paths. How about a Sculpture trail, Keep Fit areas and more seating?

Would you like to be part of it?

What days and times are best for volunteers? Suggestions please to tormore@sleat.org.uk

Duncan MacInnes



Buidheann Leasachaidh Coille Coimhearsnachd an Torra Mhòir

Tràth sa Chèitean, nochd còrr is 40 neach aig Latha Fosgailte na Coille gus barrachd dhaoine a bhrosnachadh a thighinn agus faighinn a-mach dè tha a' dol. B' e aon de na prìomh amasan beachdan a chruinneachadh air mar a ghabhadh na slighean-coille a leasachadh gus barrachd dhaoine a thàladh agus barrachd feum a dhèanamh den choille.

Mios às dèidh sin, aig madainn-obrach àbhaisteach Shaor-thoilich an Torra Mhòir, chaidh tòrr a bharrachd chraobhan a chur, slighean a

ghlanadh, agus chaidh cuid de na beachdan a chaidh a chruinneachadh a chur an gnìomh.

Tha sinn cuideachd air innealan ùra a cheannach, nam measg, bara-chuibhle dealanach a bhios na chuideachadh mòr leis an obair.

Tha sinn a' sireadh dhòighean airson na goireasan do luchd-tadhail a leasachadh – taigh-beag faisg air an àite-chuirm-chnuic agus mar a ghabhadh mullach a chur air a' bhothan san raon-phàircidh. Tha sinn cuideachd airson am fiosrachadh aig a'

gheata a leasachadh, le soidhne-fàilteachaidh ùr nas tarraingiche agus slighean air an comharrachadh nas soilleire. Dè ur beachd air slighe snaidheadaireachd, àiteachan eacarsaich a-muigh no barrachd bheingean?

Am bu thoil leat a bhith an sàs? Dè na làithean agus na h-amannan a bu fhreagarraiche do shaor-thoilich? Tha fàilte air beachdan is molaidhean aig tormore@sleat.org.uk.

Donnchadh MacAonghais

Tormore Mountain Bike Trail

Sleat's Mountain Trail Builders had the privilege of being the first to use the new Tormore half-tonne power barrow. See page 1

To create a resilient trail, the topsoil and root layer must be cut out to a spade depth and the resulting tray filled with rotten rock. Cutting by hand is not too bad but the filling is painful, especially if the borrow pit

where the rock is being obtained is some distance away.

After four years and 16 dig days, attended by nearly 100 volunteers of whom 75% were under 16 years old, the 800m long Penstock Trail is nearly complete. The crew are aiming for a soft opening at the end of the summer 2026, and once deemed safe, the trail will be opened to the public. Keep an eye on Everything

Sleat Facebook page and the Skye and Lochalsh Mountain Biking Facebook page for notice of upcoming dig days. Biker or not, all are welcome, and we'd particularly like to encourage the next generation of mountain bike riders, and their accompanying adults to get involved.

Ian Hall

Facebook: Skye and Lochalsh Mountain Biking

Norma MacPherson, Crofter

Norma MacPherson is a 6th generation crofter in Achnacloich. She is also one of the Armadale Store Managers and has recently launched her **History of Achnacloich Facebook** page. We asked her about working as a Crofter in 2026.

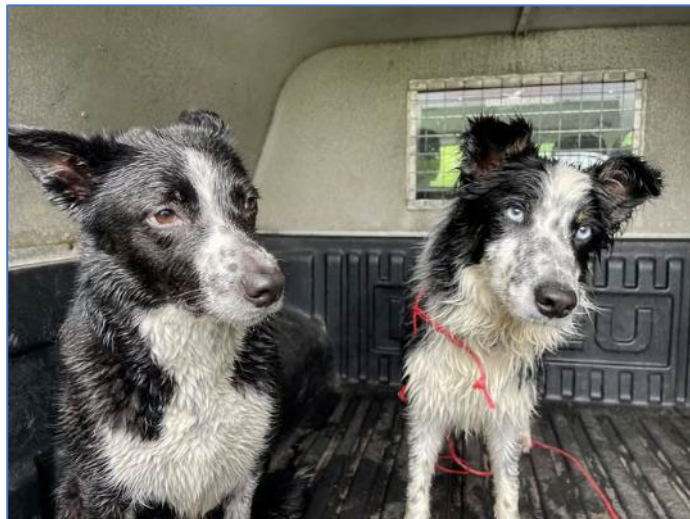
Has the weather this winter and spring affected crofting?

My year starts at tugging time in November. The winter was hard on the animals, with prolonged rain. Then the year started off extremely cold. We'd be going from one extreme to another, and that can be difficult for man and beast. Then comes lambing time and the grass was very limited. It was a really hard winter, but we are no stranger to these conditions. We are still out there every morning feeding our animals, which is tough, especially if you have to be at work by 9am! The beginning of April brought more challenges when the cold and snow came again, and some crofters and farmers had already started lambing. The lambs can get cold when born outside and you may have to bring them into the house. Then that cleared, and the rest of the lambing went not too badly.

How do visitors and walkers impact on Crofting activities?

Every area has its own problems. Aird, for example, has the public footpath to the Point straight through their Common Grazings, so that is quite an issue down there with dogs. What happens with walkers out on the hill you can never really tell, but generally folk adhere to the guidelines. But you do get one or two who are just ignorant. Within crofting areas you see visitors climbing over the dykes, climbing over the fences and gates. That's hardwearing on the facilities. Leaving gates open – that is the worst thing. If you find a gate closed – then close it! You just can't understand the mentality of someone who just can't close a gate.

Dog Poo is another. Visitor's dogs may not necessarily be wormed, so that can be a health problem for sheep.



Do you think visitors and non-crofting residents of Sleat, understand crofting?

I think some may have this fantasy idea and don't realise it is really hard work. With the help of social media, the farming and crofting way of life is being shown more, and many can see that it's not always pretty. There are so many different aspects to crofting now. My crofting is like farming so I can only really talk about it that way. It's hard work: draining and emotional, but does have its rewards - new life at lambing time, you can't beat it.

So what keeps you at it?

I ask myself that a lot in the bad days but I guess it is just who I am. It is built in my DNA.

Interview by Duncan MacInnes

Read about current Crofting Legislation on page 13

Gary Mahon – on working in Sleat



Gary Mahon of Tarskavaig featured in a short video made recently at the **Armadale Calmac Ferry Port**.

"I work for Calmac and I am a Port Assistant. My job has number of roles. I work in the office selling tickets, I make bookings, traffic management and also mooring operations. It is very public facing, almost like a tourist officer because you've got to know about your locality, suggest to people where they could go when they visit here.

Locality is important to me because I love the environment, I love the natural world that we live in here. It is very important to me. Working for a company that is rooted in the local community means a lot because we feel that we are part of a bigger picture.

The communities round here are close knit. You feel that the work we are doing is valuable because of that. I've been with Calmac for 22 years and the reason is I love my job - I am able to work in this beautiful area.

I love the fact that my job benefits the wider community and to be part of that is, I think, extra special.

See Gary talking in this beautiful small video on <https://www.facebook.com/reel/1388887406633096>

Photo of Gary by Simon Larson

Armadale Stores – Keeping prices down!

Armadale Stores works hard to keep prices down as much as financially possible, while the various costs involved just continue to grow. Like other local shops, turnover has been hit hard by the ongoing ferry fiasco which was only partly resolved in early June. There were virtually NO ferries for 10-14 days over Easter which has hit hard all the shops around Armadale and businesses along the Sleat road that usually have good visitor income.

“L’Isle de Skye est vraiment magnifique et votre pain aussi bon ver que le pain Francais!”

Just follow Armadale Stores on Facebook and Instagram to catch up with all the daily treats and what is new in the shop.

Opening hours

Shop	Monday to Friday	08.00 to 18.00
	Saturday	08.30 to 17.00
	Sunday	usually closed
Post Office	Monday / Tuesday	09.00 – 15.30
	Thursday / Friday	09.00 – 15.30
	Wednesday / Saturday	09.00 – 13.30 (closed for lunch 13.30 – 14.00)
	Sunday	closed

Armadale, Sleat, Isle of Skye IV45 8RS

01471 844289

trading@sleat.org.uk

www.facebook.com/ARMADALESTORES

Fuel Watch

The development of the Shop relies entirely on the continued support of the Sleat community and our visitors.

Petrol prices remain remarkably low. On 24 June Armadale Store reported “Our petrol price and deisel has come down, heading in a better direction. Our new petrol price is £1.57 for E5. As of this morning, **2p cheaper than our competitor and a better fuel for your engines.**”

If you are near Armadale, come and fill up at the fuel pumps, have a good look

around Armadale Stores and see what we have to offer, especially if you don't usually shop with us. You may be surprised by the wide range of products - including essentials, gluten free, vegan, refillables, lots of fresh fruit and veg without packaging, local produce and plants!

Norma, Catherine and Debbee, store managers

Follow Armadale Stores on Facebook to keep up with the daily news of fresh items and baking.



Minibus - deliveries and community support

Armadale Stores supports those who struggle to get to the shop, with free deliveries on a Thursday in the Sleat Community Trust's Electric Bus driven by our volunteers.

The Wee Electric bus is in almost constant use. A big thank you to all the volunteer drivers and organisers

As with all public and community transport, SCT has a policy of No Smoking or Vaping in the bus - and a No Dogs Policy, except for registered guide dogs.

Please get involved, if only for occasional requests. It is a good use of your time, gets you out of the house and has a remarkably positive effect on the general well-being of the community.

If you need a lift, please contact us below. We ask for a small donation of £2 per person per visit.

Myrielle on communitybus@sleat.co.uk

or 01471 844776

SEALL Summer Concerts at SMO



SEALL is delighted to announce the return of its annual Short Courses concerts, taking place at Sabhal Mòr Ostaig this summer.

Presented in partnership with SMO, the concerts run alongside the college's popular summer short courses and bring some of the country's finest traditional musicians to Skye.

This year's programme features an impressive line-up including **Charlie McKerron, Natalie Haas, Hamish Napier, Adam Sutherland and Claire-Frances MacNeil**, alongside a host of other talented performers. From traditional fiddle music and Gaelic

song to contemporary folk, the series offers something for everyone.

The concerts have become a popular part of the summer calendar, attracting local audiences, visitors and students. Held in the intimate setting of Sabhal Mòr Ostaig, they offer a rare chance to hear internationally recognised musicians perform in one of Scotland's most beautiful locations.

Tickets are on sale – these events will sell out quickly.

Full details on page 14.

www.seall.co.uk

Loss to the Sleat community

We do not often place local obituaries here. This year we have seen several deaths. Two long-standing residents were particularly well known and had major impacts on the lives of others in Sleat, and the whole of the Isle of Skye. All are missed.

John MacDonald, Tarskavaig

When John and Bridget retired in 2005 to the house and croft at 3 Tarskavaig - where John's maternal grandmother was born - they quickly established a home well known for its warm hospitality and ever-open door. They also established a Centre from which crofting in Tarskavaig would benefit hugely. To this end John brought their own animals, and a wide range of equipment - tractor, plough, mower, and more - a lifetime of knowledge and expertise, and a determination to place all of this at the service of anyone interested in engaging actively in crofting. Thus he became known as Farmer John to many in Sleat. Ably supported by Bridget they brought new life, new energy, and new people into crofting in

Tarskavaig. And John brought many qualities to this venture- an impish sense of fun and humour, a huge range of stories from his wide farming background, and a wonderful ability to engage with people, whether he knew them or not. He brought a huge commitment to family in its widest sense, his community, his animals and his farming of the land. His generosity extended far beyond community and crofting, to strangers - how many people first met him when he was pulling their campervan from a bog, or their car from a ditch? John would respond to genuine need, however or wherever it presented. He also brought an indefatigable work ethic throughout his life, which was evident until his very last days.

John also had to deal with the loss of Bridget, who passed away very suddenly during the darkest days of Covid; he dealt with this most difficult of times with quiet strength and dignity. John leaves Andrew, his son, who continues to work the family farm at Laggan, his daughter Jane, her partner Nick and their children Jack and Shuna, his sister Effie and her family - a greatly loved father, grandfather, brother and uncle. John was very much liked, trusted and respected throughout all the phases of his life - Grantown, Laggan, Tarskavaig. He leaves a legacy of great memories, of knowledge and skills imparted, of gratitude for his generosity, of cherished relationships - and an indelible mark on Tarskavaig.
Angus A. MacDonald

Mrs Pat, Camuscross

Mrs Pat Walsh, MBE, who passed away in May at the age of 93, was one of the most significant figures in the development of social services in Skye and Lochalsh in the late 20th century.

She was born in Macclesfield in Cheshire in 1933, the daughter of a chartered surveyor who managed the cathedral estate in Manchester. Pat studied social work at Nottingham University and began her career at Chelsea Borough Council in London where she was in charge of rent collection and tenant welfare. Her remit included large houses abandoned by their owners during the Blitz and which were requisitioned by the council to house families in the area whose homes had been destroyed in the bombing.

She returned to the Manchester area in 1958 where she helped set up the first housing association in Manchester. She married in 1962 and became 'Mrs Pat' (her husband also being named Pat). In the early 1970s, after contemplating moving to New Zealand, they put an advert in the Oban Times for accommodation in the west Highlands and Islands. Of the six replies they received, one led them to move to Camuscross in Sleat, south Skye.

By this time Mrs Pat had completed a course in social work and community care, and decided upon that as a career. However, there were no social work jobs available in Skye at that time so she took a post in Dingwall, coming home to Skye each weekend. After several years of this weekly commute, she got the position of hospital social worker for Skye and Lochalsh, supporting older people who were discharged from hospital but needed further home care.

Following this, Mrs Pat became a social worker for the whole area, working for a time alongside the father of Runrig's Calum and Rory MacDonald. In 1987 she became the manager of the newly-built An Acarsaid care centre and

nursing home in Broadford, and in 1993 became manager of the An Drochaid Resource Centre in Portree.

In the course of this career Mrs Pat was instrumental in founding a series of inspirational local caring groups, and worked with many others. She helped to found the Skye and Lochalsh Community Care Forum which, in turn, supported creation of a range of support services such as the Handy Person Service, the Parents' Support Group and The Skye and Lochalsh Young Carers of which Pat was a co-founder. The organisation provides after-school groups, respite breaks and trips and emotional support for young people who provide unpaid care for family members due to illness, disability or substance dependency.

She was also involved in the creation of Lochalsh and Skye Housing Association, which she said in an interview was set up initially to provide affordable housing for more far flung parts of the area to complement the focus on council housing in Portree. However, she added: "Then the government policy changed and the council weren't allowed to build anymore, and the money was given to the housing association so then they started building in Portree, Broadford and Kyle."

In 2020 when she was awarded an MBE for her services to the community, Mrs Pat said that she came from a family tradition of voluntary service and moved to a community where it was also hugely valued. She fully honoured that tradition in her own life and work. Over the years her work has helped alleviate the challenges and ease the suffering of thousands in our area.

Pat is remembered in her home village of Camuscross and far beyond as a friend and neighbour with always an encouraging word for others, and as someone whose kindness and sense of care stretched far beyond her professional life. She will be greatly missed.

IM, originally published in the West Highland Free Press

Sleat Community Council

Chair's Report, June 2026

The sale of the Clan Donald Estate has been completed. We wish the new owners well as they decide how to take the estate forward. However, this sale has highlighted something troubling: the views of communities - those who live and work the land - hold no sway morally, ethically or legally. The Land Reform (Scotland) Act has made its way through parliament but offers us bare consolation. We still lack agency, and this episode in our history convinces me more than ever that communities must have a stronger voice in the ownership, stewardship and use of their land.

There is also the matter of the Clan Donald Lands Trust, which continues to operate under a shroud of invisibility. Whilst perhaps not strictly a matter for the Community Council, this is certainly important to many people in Sleat and to the wider clan diaspora. Answers are needed. We should not, however, expect support from the authorities on this issue. OSCR, the charities regulator, has shown itself to be unfit for purpose. Their investigation into CDLT was disappointing, leaving many issues unanswered.

Communication with Highland Council remains challenging. Their lack of resources, our distance from Inverness, and a top-down culture that fails to value engagement and participatory decision-making all play a part. Effective communication channels are essential for our community, for strong democracy, and for building trust.

That said, there are glimmers of hope. I want to thank the council officers who have been positive and responsive, as well as Councillor John Finlayson for his consistent efforts to support our community. John is always quick to respond and happy to take up the issues we raise. His approach makes a real difference.

Our roads reached a nadir during the winter, falling into the worst state of disrepair many can remember. Since then, we have seen significant patching work from Highland Council, and this council has received assurances that there is a plan

to fully resurface roads where needed. We look forward to seeing this delivered.

Ferry problems are a familiar refrain for Sleat. This year has been one of the worst for many years, and the impact on local businesses here and in Mallaig has been significant. The service should meet three essential requirements. First, we need two appropriate vessels to maintain reliability. Second, we need clear accountability for timetables and performance. Third, we need continuity of service across summer and winter.

To be clear, this is not merely an inconvenience. The ferry disruptions are costing people their livelihoods and jobs. For Sleat and the communities around Mallaig, this ferry service is an economic and social necessity. It is time that CalMac, CMAL and Transport Scotland started treating it as such. Sleat Community Council, along with the Ferry User Group and Mallaig Community Council, will continue to advocate for the ferry service we need and deserve.

I'm delighted that our Local Place Plan is now registered with the Highland Council and working for us. I hear a lot of comments and complaints - about roads, ferries, wild camping and more - but when more of us get active, we can shift the dial. We can make more things happen. We can make Sleat the place we want it to be. Take this as a call to action, an invitation to get involved in the Community Council, volunteer with the Community Trust or CDI, take the initiative with the things that matter to you. There are many opportunities to volunteer and if they don't exist, create them!

Finally, my thanks to all the members of the council for their hard work and collegiality this year. I particularly want to thank Kate Duffus for assuming the role of Secretary at the last AGM, and to John Weir for his co-option to the council and for taking over the Secretarial duties from Kate for the year ahead.

Dr Andy Williamson June 2026

Sleat Community Councillors

The Council meets once a month in either Tarskavaig, Ardvasar or An Crùbh, on different days. After a summer break the next meetings are

Tuesday 1 September at 7pm in An Crùbh

Thursday 1 October at 7pm in Ardvasar Hall

Wednesday 4 November at 7pm in Tarskavaig Hall

Andy Williamson, Chair Janet MacDonald, Vice-chair

John Weir, Secretary Kate Duffus

Tim Shone Duncan MacInnes, Treasurer

Facebook Sleat Community Council

info@sleatcommunitycouncil.org.uk

www.sleatcommunitycouncil.org.uk

Scottish Election Day

Turnout in Sleat higher than average.

While it is now well in the past it is worth noting that at the Scottish Elections on 7 May 2026, the average turnout in the Skye, Lochaber and Badenoch constituency was 57.8%, and 54% in the more urban constituencies.

At the Ardvasar Polling Station turnout was deemed to be 71%, and we suspect Tarskavaig was higher.

Do not under-estimate the voice of rural communities.

Marquee available for rent

Sleat Community Trust has a marquee 8m by 6m for local hire. Self erection only. Full details from myrielle@sleat.org.uk



SCT Board Meeting no. 250

Earlier this year the SCT Board met for its 250th Board Meeting since its inception. That is a lot of meeting time, energy and inspiration over the years – with a long list of successful projects as a result. It is important you know who sits on the various community boards in Sleat.

Sleat Community Trust

Donaidh MacDonald, chair
Eilidh Grant
Ruud Van Ruitenbeek
Garry Noakes
Andy Williamson, delegated from SCC
Paddy McKay
John MacDonald
Duncan MacInnes
Gillian Munro, delegated from SMO
Sophia Lockley

Sleat Renewables Limited
Chris Pendlebury, chair
Tim Godfrey
Polly MacInnes
Henrik Micski
Garry Noakes
Alan Drever

Sleat Community Trading Ltd

Ruud Van Ruitenbeek, chair
John Cayley
Archie MacCalman
Flora MacLean
Patricia Petri-Clark

SCT Administration and Office

Myrielle MacLeod 0147 844776
Donnally Bettis, finance support
Facebook - SleatCommunityTrust
www.sleat.org.uk

Community Development Funding for 3 years.

Sleat Community Trust (SCT) has been awarded £120,000 funding over three-years from the Scottish Government's Strengthening Communities Programme. The funding means the Trust can employ a Community Development Officer. This new role will be the driving force behind SCT's strategic development, working with the board, partners and others to build on ideas in our Local Place Plan, develop new projects and a more sustainable income from our assets, which include Tormore Community Woodland and Armadale Stores. SCT is currently interviewing prospective candidates.

Andy Williamson

"I'm so happy to live in this wonderful community and proud to be a volunteer on one of the boards of Sleat Trading, that help to manage things in our part of Skye."

Sound of Sleat Ferry Users Group SUSFUG

After a dreadful ferry Service for the first part of the year, we finally got our ferry back, but backed up by the Bhrusda rather than the Loch Fyne. However, there is no second ferry on Saturday as the Bhrusda helps out on the Small Isles run. And, of course, Bhrusda takes about 20 cars fewer than Loch Fyne, and no coaches.

Mona Mackenzie is our new Calmac Area Manager for Hebrides South, replacing Ian Graham.

Tim Shone and Paddy MacKay represent Skye on the User Group

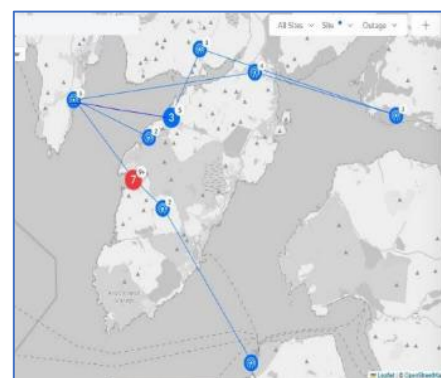
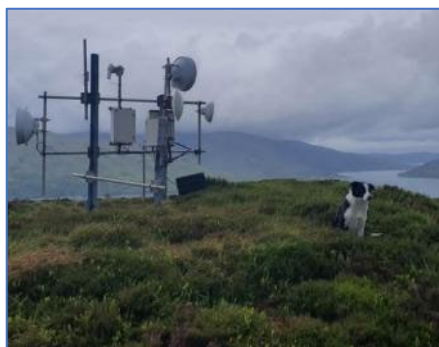


Skyenet your local Internet provider

Skyenet is the community-owned internet provider for south Skye. Despite the arrival of Full Fibre in some places, Skyenet Members remain loyal to this local service which is economic. **Calum Stiven** is always available for any issues.

We don't often show the network mapped out, but here it is (minus Aird). Originally, we had a mast on Rum, and we built the Loch Dougal mast (second bottom) to replace this, which is our only off-grid site. The network hasn't changed layout other than that since we built it in 2015. We plug into the West Highland Internet Exchange (WHIX) at the two

most easterly points on the map, Mallaig and Beinn Mhialairigh; where we hand over to a company called HUBS who take us down to Edinburgh, to one of the big Internet Exchanges in Scotland.



Calum Stiven
www.facebook.com/SCTSkyenet!

Editorial

Sleat is a lively community with well-established community organisations. We have named the 30 or so board members and councillors, to emphasise just how many folk in Sleat get involved, in a totally voluntary capacity. On top of that are at least 50 other people who volunteer in all sorts of ways - in the community-run shops and hubs, in Tormore Woodland, and driving our minibus. Another 25 people have contributed to this newsletter.

There are plenty more opportunities for you to volunteer – just occasionally, or regularly. There is no better way to make connections and know you are making a difference.

An Slèiteach is the voice of Sleat, published quarterly.

The deadline for articles, adverts and photos for the October edition is Friday 18 September.

We need help to make this a better newsletter. If you aspire to get into journalism, editing or newsletter writing please come and join us! Our thanks to all the contributors and to **Nicola Thomson** providing the Gaelic summaries.

Duncan MacInnes, Editor, on behalf of SCT and SCC. tormore@sleat.org.uk

"We want to say how much we enjoy this newsletter - very readable, very informative and well worth the effort which I know goes into its publication. Thank you! We're not permanently in Sleat but really appreciate the work of the Community Trust - particularly this sort of communication keeping us all in the picture."

Facal bhon Deasaiche

'S e coimhearsnachd bheòthail a th' ann an Slèite le iomadh buidheann coimhearsnachd làidir. Tha sinn air ainmean mu 30 ball-bùird agus comhairliche coimhearsnachd fhoillseachadh gus sealltainn cho mòr 's a tha daoine ann an Slèite a' cur ris an àite gu saor-thoileach. A bharrachd air sin, tha co-dhiù 50 neach eile a' toirt seachad an cuid ùine ann an iomadach dòigh – anns na bùthan is ionadan coimhearsnachd, ann an Coille Choimhearsnachd an Torra Mhòir agus a' dràibheadh Bus Beag Shlèite. Chuir mu 25 neach eile ris an iris seo cuideachd.

Tha iomadh cothrom ann fhathast a dhol an sàs mar shaor-thoileach – ged a bhiodh corra uair agad no uairean cunbhalach. 'S e deagh dhòigh a th' ann ceanglaichean ùra a dhèanamh agus fios a bhith agad gu bheil thu a' cur gu mòr ris a' choimhearsnachd.

'S e An Slèiteach guth Shlèite agus tha e ga fhoillseachadh ceithir tursan sa bhliadhna.

'S e **Dihaoine 18 Sultain** an ceann-latha airson artaiglean, shanasan is dhealbhan airson iris na Dàmhair.

Tha sinn daonnan a' sireadh dhaoine gus cuideachadh le bhith a' dèanamh na h-iris seo fiù 's nas fheàrr. Ma tha ùidh agad ann an naidheachdan, deasachadh no sgrìobhadh chuairt-litrichean, bhitheamaid air leth toilichte ur faicinn nar measg.

Mòran taing dhan a h-uile duine a chuir ris an iris seo agus do **Nicola NicThòmais** airson nan gearr-chunntasan Gàidhlig.

Donnchadh MacAonghuis, Deasaiche, às leth Urras Coimhearsnachd Shlèite agus Comhairle Coimhearsnachd Shlèite tormore@sleat.org.uk

Faces of Sleat

After three years in preparation, Sleat photographer Simon Larson launched his documentary project featuring portraits of residents and workers based in Sleat.

The project, 'Faces of Sleat' aimed to document a significant cross-section of the 900 or so people who live and work on the peninsula.

The portrait project reached its conclusion in the form of a glossy 80-page A4 softback book featuring 300 portraits which was launched on Saturday 16 May at Armadale Stores.

"I used a 1970s medium format camera to make the portraits" Simon said. "Over the three years, I shot 56 rolls of black and white film which I processed in my darkroom at Camard".

Simon was inspired by both Richard Avedon and August Sander, who documented people in America and

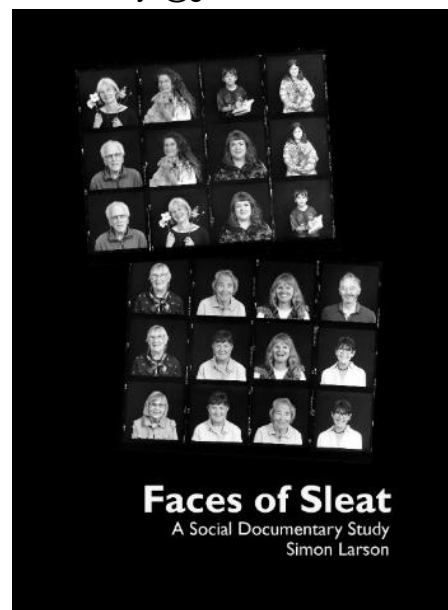
Germany respectively in the 20th Century.

He added: "Many of the portraits were made in temporary studios set up in village halls, cafes, Sleat Community Trust boardroom and even a crofting shed, while others were made in different locations and in people's houses and work environments such as art studios, cattle sheds and workshops."

He added: "Sadly, there are a growing number of people who have passed away since their portraits were made; others have moved away from the area and some were residents purely for the tourist seasons, but I hope this book will form a valuable resource for future generations, of which faces lived and worked in Sleat between 2023 and 2026".

The first print-run of 150 books quickly sold out, and there are just over 50 copies left of the second

print run. Copies can be obtained directly from Simon for £10.00 and should you wish to buy one, he can be contacted by Messenger or Email: si.larson.skye@gmail.com



South Skye Nature Festival, Friday 24th to Sunday 26th July

Organised by Sleat Nature Group, the weekend is a celebration of Skye's amazing nature with more than 40 guided walks, talks and workshops. There is something for everyone - whether you are a nature beginner or expert, young or old. Almost all events are free.

Events are filling up fast, so reserve your places now at www.sleatnaturegroup.org/ssnf/

The festival will launch on Friday 24th from 7-9 pm at An Crùbh. Drop in to mingle and chat with event leaders, with music by Skirlin' and drinks available at the bar.

Fancy a guided walk looking for otters, or fabulous ferns? How about a wander through Scottish rainforest while learning how nature finds its way into Gaelic names? Or a stroll around Knock or Ord to see how landscape has shaped the nature that lives there. Try your hand at rock pooling and pond dipping to discover creatures of the sea and freshwater. Find out how volunteers are restoring woodlands and peat at Tormore and Broadford. Experience inshore wildlife with a nature-focused kayaking session.

If you'd like to improve your bird identification skills, join the workshop on bird surveys, or for edible plants try a coastal and woodland foraging session. You can even learn to make a mat from beach rope! Learn about observing birds and cetaceans by dropping into the bird-ringing and shore watch sessions.

Take a deep dive into nature with talks by our expert speakers celebrating the amazing birds of Skye, or the sounds of wildlife around us. How about learning about species re-introductions in the Highlands, or the role of biodiversity and marine protected areas, or the wonders of the secretive corncrake? Why are frogs, toads, lizards and snakes the crofter's friends, and how do sea trout find their way home?

On Saturday 25th evening we will screen "Ocean with David Attenborough" at Sabhal Mòr Ostaig, with a Q&A session.

Don't forget to reserve your places at www.sleatnaturegroup.org/ssnf/

Dorothy Jackson and Kate Rawlinson

The festival hub will be at An Crùbh community centre and café, with last minute tickets - if available - and stalls and displays from: *British Divers Marine Life Rescue, Fishing For Litter, Amphibian & Reptile Conservation, Bumblebee Conservation Trust, Trees For Life, Skye & Lochalsh Rivers Trust, Whale & Dolphin Conservation Trust, RSPB, British Trust for Ornithology, Blue Marine Foundation, CLIMAFORE, Forestry & Land Scotland ... and more.*

Japanese Knotweed and other invasive species



There is a growing amount of **Japanese Knotweed** arriving in Sleat, particularly along the main road. It is very difficult to get rid of and is considered so bad it can affect house prices if it gets in your garden. Do not trim it – the least bit left in the ground can cause a new plant. It is best to seek professional advice on its removal.

Likewise, **Gunnera** is appearing everywhere. It is seen as a magnificent garden plant, like oversized rhubarb, but it has become invasive in Sleat in the last few years. It seeds and spreads very rapidly.

Image courtesy of Raasay CT

Kilbeg House Garden

Kilbeg House held a very successful Garden opening under the Scotland's Gardens Scheme on 24th May.

Despite the damp day many folk came along and over £400 raised for charity.

Owners and gardeners, **Nicola and Philip Howarth** were delighted with the interest and support. The beautifully landscaped garden is well worth a visit.

Kilbeg House will be open again:-

Sunday 5 July from 2 to 4pm, and on Sunday 2 August and Sunday 6 September. Entry £5.

Crofting in the 21st Century

Crofting is a highly controlled environment that supports rural livelihoods. Methods of control that are imposed by external legislators are not always as effective as they could be to the crofting interest and the Sleat General Grazings Committee have been active at many levels, including the cross-party group on crofting along with other stakeholders to ensure crofting is not disadvantaged by legislation that is not fully thought through. In summary, there have been changes which affect all crofters and land managers in Scotland. The main pieces of legislation that have changed over the recent years are laid out in this article.

Crofting and Scottish Land Court Bill 2026

Crofters will benefit from simplified processes and face less bureaucracy following the passing of the Crofting and Scottish Land Court Bill.

The Bill introduces a new process for fast-tracking the transfer of a croft between family members, strengthens the role of grazing committees sharing common land, halts the separation of crofts and grazings shares except with Commission consent, and gives crofters a greater say in how the land they work on is used.

The Scottish Land Court and the Lands Tribunal for Scotland will be amalgamated to create one cohesive body, the Scottish Land Court, retaining the identity and distinctive nature of the Scottish Land Court, including the statutory requirement for a Gaelic speaking member.

Natural Environment (Scotland) Act 2026

This is landmark legislation designed to tackle the twin crises of climate change and biodiversity loss. It establishes legally binding statutory targets for nature restoration, making Scotland one of the first countries globally to legislate for this.

The key provisions of the legislation include:

Biodiversity Targets: Imposes a duty on Scottish Ministers to set legally-binding, long-term targets to halt biodiversity loss by 2030 and achieve substantial nature restoration by 2045.

National Parks Modernization: Broadens the purposes of National Parks to include a heavier emphasis on biodiversity recovery and the climate crisis.

Deer Management: Expands NatureScot's powers of intervention to control high deer populations, which overgraze and damage sensitive habitats.

Sleat General Grazings Committee. SGGC, represents the interests of the Crofters within the 7 Townships of central Sleat – Teangue, Saasaig, Ferindonald, Kilmore, Achnacloich, Tarskavaig and Tokavaig, who have a share in the central grazings area common to these Townships. Within Armadale Estates Ltd in south Sleat are 4 more Crofting Townships – Gillean, Calligarry, Aird. and Point of Sleat. Ardvasar also has three crofts. Within the estate of Fearann Eilein Iarmain in the north of Sleat are Duisdale Mòr, Duisdale Beag, Camus Croise and Drumfearn.

Croitearachd san 21mh Linn

Tha croitearachd na pàirt chudromach de bheatha dhùthchail agus tha i fo smachd laghan is riaghailtean. Chan eil na riaghailtean sin an-còmhnaidh a' toirt làn aire do fheumalachdan nan croitearan agus tha Comataidh Ionaltraidh Choitcheann Shlèite air a bhith ag obair gu h-èisgaidh le buidhnean eile agus le Buidheann Thar-phàrtaidh

Environmental & Miscellaneous Changes: Includes updates to marine protection measures.

The Land Reform (Scotland) Act 2025

The main thrust of the Bill is to put owners of large-scale landholdings under enhanced community engagement and transparency obligations, with their ability to transact with such land restricted. The Bill also introduces significant amendments to the Agricultural Holdings legislation.

The Agriculture and Rural Communities (Scotland) Act 2024

This an Act of the Scottish Parliament which makes provision to enable the support of agriculture through the adoption and use of sustainable and regenerative agricultural practices, the production of high-quality food and animal health and welfare, rural communities and the rural economy through the creation of a framework that allows for continuing professional development for those involved in agriculture and related industries, the welfare and identification of animals, and to enable rural communities to thrive.

The Dogs (Protection of Livestock) (Amendment) (Scotland) Act 2021

Livestock worrying is a severe rural crime and welfare issue across Scotland and this act aims to protect farmed animals like sheep, cattle, and poultry from devastating dog attacks. Under this act, it is a criminal offense if a dog attacks, chases, or is dangerously out of control in a field where livestock are present.

The legal consequences for allowing a dog to worry or attack livestock are severe and Courts can now impose fines of up to £40,000 and up to 12 months in prison.

Other Concerns

There have been some who have been concerned about the sale of the Clan Donald Lands Trust estate.

The Sleat General Grazings Committee welcome the new owners – Armadale Estate Ltd.'s early and positive engagement with us. We are currently working with them to address some legacy issues and are jointly reviewing several projects that were put on hold during the sale process, with a view to them potentially being taken forward in the future.

Duncan MacDonald and Alistair Culbertson for SGGC

na Croitearachd gus dèanamh cinnteach nach bi croitearan is croitearachd a' call air sgàth an reachdais ùir.

Tha an artaigil seo a' toirt seachad gearr-chunntas air cuid de na prìomh atharrachaidhean reachdail anns na bliadhnanachan mu dheireadh a bheir buaidh air croitearan is manaidsearan fearainn air feadh na h-Alba.



NEWS FROM THE EI



BÙTH EILEAN IARMAIN Not only are our award-winning Gaelic Whiskies and Gaelic Gins available in the Bùth – with free tastings for all! – but you'll also find an inspired and carefully curated collection of gifts, many of them locally made.

Browse jewellery, Scott MacKenzie's antler candle holders and charcuterie boards, John Sloan's pottery (including his ever-popular Skye Crofts), recycled wool rugs, Skye toiletries, books, greetings cards, jams, chutneys, chocolates and much more.

GALLERY AN TALLA DEARG, by the historic pier at Eilean Iarmain, is open daily throughout the summer with a rolling programme of exhibitions.

Come along and meet the artists who curate their own exhibitions and are always happy to chat about their work, the weather, the wildlife... and life in general!

Over the coming months we are delighted to welcome:

- Scott MacDonald
- Marianne Worthy & Maddy Osborn
- Claire Rooney & Lindsay Johnston
- Matt James Brown

We're also delighted to welcome back Derek Robertson as he celebrates his 20th exhibition at Eilean Iarmain. Keep your eye peeled for more news on this special milestone in the months ahead!



We look forward to welcoming you to Gallery An Talla Dearg throughout the season.



EILEAN IARMAIN
THE ISLE OF SKYE

t: 01471 833 266
e: info@eileaniarmain.co.uk
w: www.eileaniarmain.co.uk

SEALL Events - See page 7

Fèis an Eilein July 11 – 18, Kyleakin Hall

Cirquation Present...Journey
Saturday 11 July at 7.45pm, SMO

Traditional Music

Summer Concerts at Sabhal Mòr Ostaig
All at 7.30pm

Natalie Haas, Su-a Lee, Trish Strain
Tuesday 21 July

Claire Frances MacNeil, Padruig Morrison,
Kathleen MacDonald – Tuesday 28 July

Charlie McKerron

Tuesday 4 August 7.30pm

Adam Sutherland, Emma Tomlinson
Tuesday 11 August

Hamish Napier and Michael Biggins
Tuesday 18 August

Details of all events on seall.co.uk



LATHA FOSGAILTE
OPEN DAY

DICIADAIN
WEDNESDAY

26.08.2026
10:00-16:00



Thig a chèilidh oirnn gus sùil a ghabhail air an làraich againn agus bruidhinn ri luchd-teagaisg is oileanaich mu bheatha aig Sabhal Mòr Ostaig!

Join us for our open day to have a look around our campus and chat with staff and students about what life is like studying at Sabhal Mòr Ostaig!



WWW.SMO.UHI.AC.UK

f X Instagram in YouTube SoundCloud

Sleat Renewables Ltd – Tormore Forest plan

The Tormore Forest Management Plan is now very close to being ratified by Forest Scotland, after more than two years of delays from them.

Once this is passed, SRL will start the process of clearing the last section of mature conifers from the northern end of Tormore..

Logs for Sale at only £1 each

SRL needs to clear old logs to make way for the new felling. They are of variable quality but well matured and good for wood-burning stoves. They are next the forest road above the Fank. SRL are selling these off at only £1 a log, collection only.

Please contact SCT office if you would like to buy some.
myrielle@sleat.org.uk



Refugee Festival Scotland comes to Skye

Skye celebrated Refugee Festival Scotland for the first time with film screenings, a community art project and refugee food. The event was a collaborative effort between An Crùbh, Scottish Refugee Council and Skye Community Cinema.

The free event held on Friday, 19th June was part of the larger Festival with more than 150 events that took place nationwide over 10 days.

The community watched English director Ken Loach's *The Old Oak* and a short film *The Magnolia Grows At Night*. Both films explore the themes of class solidarity and migration.

An Crùbh and Scottish Refugee Council also launched a community art '*Buntainneas ; Belonging*' where members of the public were invited to draw their vision of an inclusive 'Faces of Scotland' on a large canvas. This participatory art is a show of solidarity and support for people of all colours and backgrounds, and to celebrate diversity and inclusivity.

The artwork, which was spearheaded by local artist Caitlin Turnbull, is currently hanging at An Crùbh until 14th July. Everyone is invited to leave their mark on the artwork.



To round off the celebration, An Crùbh café also offered a special menu based on recipes crafted by refugee/asylum seeker chefs.

Lorna Pike

Visitor to Sleat? Welcome ~ Fàilte - how to be happy

Scotland has a policy of **responsible Open Access to the Countryside**.

Enjoy your walking and exploration but please be **responsible** :-:

Dogs must be kept under total control and certainly on a lead near any livestock, even if on the other side of a fence

Don't light fires or BBQs on the roadside or in open ground. They are the cause of many wild-fires in the Highlands

Don't climb fences, gate or stone dykes. Leave all gates closed.

Driving and Parking

ALWAYS stay on the left-hand side of a single-track road, even if the Passing Place is on the right.

Use passing places on single track road to allow drivers behind you to overtake.

The only way to get through a herd of cows or sheep on a single-track road is to gently nudge your way through.

Talk to us!

Visit our local community shops, in Armadale and An Crùbh, our cafes and hotels.

Talk to us – we love a chat.

And a request from Julia - Please don't pee behind our garden walls

And finally . . .



Sudden snow for one night at Easter



Café 1925 in Ardvasar
Open Thursday to Sunday from 9am to 3pm



Local baking delivered to Armadale Stores ("better than French bread", says visiting French couple - see p 7)



Whatever the weather we will plant trees.



Just going for a ride . . . Ian Hall

Sleat Community Trust July 2026